

For Grades 9-12



www.DecodingCancer.org

DECODING C A N C E R

—
Featuring
BioCONNECT

A Science Teacher Workshop

An integrated curriculum supplement that enhances learning by encouraging students to transfer their knowledge of biology and genetics to real-life situations using breast cancer as the context.

Thursday, March 16, 2017

from 9:00am to 3:00pm

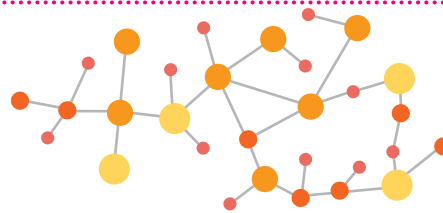
(continental breakfast and lunch provided)

@ Rutgers Newark- Paul Robeson Center Rm 226

350 Dr. Martin Luther King Jr. Blvd

"The curriculum design allows for use in multiple classes; AP Biology, Biology and is easily modified for IEPs."
- BioCONNECT Teacher

"Decoding Cancer" featuring BioCONNECT is a ground-breaking collection of standards-aligned interactive classroom resources created by a visionary group of breast cancer advocates, experts, and educators - the Val Skinner Foundation, the LIFE Center at Rutgers Cancer Institute of New Jersey in collaboration with the Rutgers School of Public Health, and Discovery Education. Decoding Cancer facilitates meaningful discussions among high school teachers, students, and families through comprehensive digital resources. An innovative and interactive high school biology and genetics education program featuring the BioCONNECT (Biology of Cancer, Online Education Connecting Teens) curriculum, Decoding Cancer enhances science literacy and increases cancer education and awareness among youth.



Join your peers for a fun, challenging and interactive workshop. Participants assume the roles of both teacher and student as they experience the curriculum's website and online forum, engage in hands-on activities and discover methods to easily integrate these innovative classroom-tested materials into existing lessons.

Cost to attend is \$200, participants learn integration methods, obtain professional development hours and receive the high school curriculum module and kit (valued at \$300, including gel electrophoresis equipment).

To register for this NGSS-focused professional development, contact Casandra Gabriele, Program Coordinator: casandra.gabriele@rutgers.edu or 732-235-4160

For additional information, contact:

Rutgers School of Public Health
Liberty Plaza
335 George Street, Suite 2200
New Brunswick, NJ 08903
p. (732) 235-4160
f. (732) 235-4960
cscbre@sph.rutgers.edu

Rutgers, The State University of New Jersey

