

blood

1998 91: 1469-1477

Acute Bleeding After Bone Marrow Transplantation (BMT)— Incidence and Effect on Survival. A Quantitative Analysis in 1,402 Patients

S. Nevo, V. Swan, C. Enger, K.J. Wojno, R. Bitton, M. Shabooti, A.K. Fuller, R.J. Jones, H.G. Braine and G.B. Vogelsang

Updated information and services can be found at:

<http://bloodjournal.hematologylibrary.org/content/91/4/1469.full.html>

Articles on similar topics can be found in the following Blood collections

[Transplantation](#) (1828 articles)

Information about reproducing this article in parts or in its entirety may be found online at:

http://bloodjournal.hematologylibrary.org/site/misc/rights.xhtml#repub_requests

Information about ordering reprints may be found online at:

<http://bloodjournal.hematologylibrary.org/site/misc/rights.xhtml#reprints>

Information about subscriptions and ASH membership may be found online at:

<http://bloodjournal.hematologylibrary.org/site/subscriptions/index.xhtml>

Blood (print ISSN 0006-4971, online ISSN 1528-0020), is published weekly by the American Society of Hematology, 2021 L St, NW, Suite 900, Washington DC 20036.

Copyright 2011 by The American Society of Hematology; all rights reserved.



Acute Bleeding After Bone Marrow Transplantation (BMT)— Incidence and Effect on Survival. A Quantitative Analysis in 1,402 Patients

By S. Nevo, V. Swan, C. Enger, K.J. Wojno, R. Bitton, M. Shabooti, A.K. Fuller, R.J. Jones, H.G. Braine,
and G.B. Vogelsang

Acute bleeding after bone marrow transplantation (BMT) was investigated in 1,402 patients receiving transplants at Johns Hopkins Hospital between January 1, 1986 and June 30, 1995. Bleeding categorization was based on daily scores of intensity used by the blood transfusion service. Moderate and severe episodes were analyzed for bleeding sites. Analysis of the cause of death and the interval of the bleeding episode to outcome endpoints was recorded. Survival estimates were computed for 1,353 BMT patients. The overall incidence was 34%. Minor bleeding was seen in 10.6%, moderate bleeding was seen in 11.3%, and severe bleeding was seen in 12% of all patients. Fourteen percent of patients had moderate or severe gastrointestinal hemorrhage, 6.4% had moderate or severe hemorrhagic cystitis, 2.8% had pulmonary hemorrhage, and 2% had intracranial hemorrhage. Sixty-one percent had 1 bleeding site and 34.4% had more than 1 site. Moderate and severe bleeding was more prevalent in allogeneic (31%) and unrelated patients (62.5%) compared with autologous patients (18.5%). Significant dis-

BLEEDING AFTER bone marrow transplantation (BMT) is a daily clinical concern for BMT units. Previous studies have reported the incidence, risk factors, and outcome of bleeding after BMT; however, in most of these studies, bleeding was investigated by the specific site, eg, gastrointestinal bleeding,¹⁻⁵ urinary tract bleeding,⁶⁻¹⁴ pulmonary hemorrhage,¹⁵⁻²⁶ or intracranial hemorrhage.²⁷⁻³⁰ Yet, because patients may experience bleeding from multiple sites either simultaneously or sequentially, the extent and significance of overall acute bleeding is unknown.

Bleeding research has been hampered by the lack of uniform methodology used in bleeding classification, which resulted in significant variations in the reported incidence by site. Gastrointestinal (GI) hemorrhage was found in 5% to 15%¹⁻³ of patients after transplantation, hemorrhagic cystitis (HC) was found in 4% to 52%,⁶⁻¹³ less than 1% to 21% of diffuse alveolar hemorrhage (DAH) was found in autologous patients,¹⁵⁻²⁰ and 2.5% to 5% of subdural hematomas were found in leukemic patients after transplantation.^{27,30}

Limited data are available regarding the association of bleeding with early mortality. High mortality has been reported with DAH in as many as 50% to 100% of cases^{15,16,24} and with intracerebral hemorrhages^{27,29}; however, GI bleeding, HC, and subdural hematomas, although capable of causing significant morbidity, have not usually been associated with decreased outcome.^{1,7,8,13,27}

Bleeding associated with mortality was investigated by Tornebohm et al³¹ in a retrospective analysis of 83 leukemic patients with terminal course after transplantation. Bleeding was defined according to the classification suggested by Gmur et al.³² Hemorrhage was found in 38 of 83 (46%) patients. Two of 38 had grade 1 bleeding, 16 of 38 had grade 2 bleeding, 13 of 38 had grade 3 bleeding, and 7 of 38 had grade 4 bleeding. Fatal bleeding was identified in 16 of 83 (19%) patients from intracranial (IC) hemorrhage (5 patients), gastrointestinal (5 patients), and generalized bleeding (6 patients). The overall

tribution of incidence was found among the different diagnoses, but not by disease status in acute myeloid leukemia, acute lymphoblastic leukemia, chronic myelogenous leukemia, Hodgkin's disease, and non-Hodgkin's lymphoma. Bleeding was associated with significantly reduced survival in allogeneic, autologous, and unrelated BMT and in each disease category except multiple myeloma. Survival was correlated with the bleeding intensity, bleeding site, and the number of sites. Although close temporal association was evident to mortality, bleeding was recorded as the cause of death in only the minority of cases compared with other toxicities after BMT (graft-versus-host disease, infections, and preparative regimen toxicity). Acute bleeding is a common complication after BMT that is profoundly associated with morbidity and mortality. Although bleeding was not a direct cause of death in the majority of cases, it has a potential prognostic implication as a predictor of poor outcome in clinical assessment of patients after BMT.

© 1998 by The American Society of Hematology.

hemorrhagic incidence was similar in allogeneic and autologous BMT populations (18% and 19%, respectively). Findings of terminal hemorrhage in autopsies of patients after BMT identified DAH^{33,34} and, less frequently, intracranial hemorrhage.^{35,36}

The goals of this study were to determine the extent and significance of bleeding complications in a large cohort of BMT patients in the acute posttransplantation period. We included clinically significant bleeding from all sites, whether sole or overlapping, occurring simultaneously or sequentially within 100 days after BMT. Based on a concurrent evaluation of bleeding, the entire bleeding episode was retrospectively graded by severity to apply a quantitative analysis for incidence and outcome.

MATERIALS AND METHODS

Study Group

One thousand four hundred two patients received transplants at Johns Hopkins Hospital for hematologic diseases or solid tumors from January 1, 1986 to June 30, 1995. All patients were screened for bleeding during the first 100 days after BMT. The patients demographics, including diagnosis, stage of disease, type of BMT, preparative regimens, age, and sex, are given in Table 1. The majority of patients

From the Johns Hopkins Oncology Center, Baltimore, MD; and the Department of Pathology, University of Michigan Hospital, Ann Arbor, MI.

Submitted April 23, 1997; accepted October 9, 1997.

Supported in part by National Cancer Institute Grant No. CA15386.

Address reprint requests to G.B. Vogelsang, MD, Johns Hopkins Oncology Center, 600 N Wolfe St, Room 3-121, Baltimore, MD 21287-8985.

The publication costs of this article were defrayed in part by page charge payment. This article must therefore be hereby marked "advertisement" in accordance with 18 U.S.C. section 1734 solely to indicate this fact.

© 1998 by The American Society of Hematology.

0006-4971/98/9104-0024\$3.00/0

Table 1. Demographics of 1,402 BMT Patients Receiving Transplants at Johns Hopkins Hospital from January 1, 1986 to June 30, 1995

	No. of Patients	%
Diagnosis		
AA	20	1.4
AML	289 (140, 149)	20.6
ALL	124 (51, 73)	8.8
Breast cancer	199	14.2
CML	181 (148, 33)	12.9
HD	112 (62, 48)	8.0
NHL	279 (216, 59)	19.9
MM	32	2.3
Others	166	11.8
Type of BMT		
Autologous	887	63.3
Allogeneic	469	33.5
Unrelated	24	1.7
Others	22	1.5
Preparative regimen		
Bu-Cy	520	37.1
Bu-VP-Cy	122	8.7
Cy-CSA	19	1.4
Cy-TBI	410	29.2
Cy-Thio	199	14.2
VP-CBDCA-Cy	90	6.4
Others	42	3.0
Age		
Pediatric	294	21.0
Adults	1,108	79.0
Sex		
Females	676	48.2
Males	726	51.8

In parenthesis (after the number of patients) are numbered the good- and poor-risk patients for each diagnosis.

had hematologic malignancies and breast cancer. The remaining diseases, mainly solid tumors in pediatric patients, were grouped as others. BMT for breast cancer was first performed in 1988, BMT for multiple myeloma (MM) was first performed in 1989. Patients were divided into good- and poor-risk populations based on the stage of disease. Good-risk prognosis included acute leukemia in first complete remission, chronic myelogenous leukemia (CML) in chronic phase, chemotherapy sensitive Hodgkin's disease (HD) and non-Hodgkin's lymphoma (NHL), and patients with aplastic anemia (AA). All other patients were considered poor risk. Breast cancer patients were transplanted with recurrent disease. Most allogeneic patients had matched siblings, 28 patients were transplanted with 1 major antigen mismatch from family member. Analyses applied to allogeneic patients included both matched and 1 antigen mismatched transplants. Twenty two transplants grouped as others included: 12 peripheral blood stem cells transfusions, 7 syngeneic, 2 cases had haploidentical BMT, and 1 patient had transfusion of cord blood hematopoietic stem cells. The preparative regimens used included busulfan plus cyclophosphamide (Bu-Cy) for hematologic malignancy, Cy plus total body irradiation (Cy-TBI) for hematologic malignancy, Bu-Cy plus etoposide (BU-VP-Cy) for hematologic malignancy, Cy plus Cyclosporine A (Cy-CSA) for AA, Cy plus Thiotepa (Cy-Thio) for breast cancer, and etoposide-carboplatin Cy (VP-CBDCA-Cy) for solid tumors. Indications and dosage were previously published.³⁷⁻⁴⁰

Bleeding Evaluation

Bleeding identification. Bleeding was identified and evaluated based on a daily score of intensity that is assigned by the blood transfusion service for every hospitalized BMT patient. The scoring

system integrates the patient's clinical assessment (rounds and chart review) with daily hematologic laboratory values and daily red blood cell (RBC) usage. The frequency of scoring is twice a week up to every weekday, depending on the clinical status. Bleeding score is not assigned during the weekends; however, it is retrospectively assigned in the next scoring evaluation. This scoring method has been successfully used in the same format since the early 1980s to manage individual blood product requirements.

The daily bleeding scores were defined as the following. Score 0 signified no bleeding. Score 1 was given for occult blood in body secretions detected by heme positive in dipstick (Hemocult/Gastrocult, SmithKline Diagnostics Inc; Bili-Labstix, Bayer Corp), which is performed as a routine screen. Mild petechiae or minimal vaginal spotting were also considered as score 1. A score 2 was assigned for minor bleeding that did not require RBC transfusion over the routine transfusion needs (eg, ecchymosis, epistaxis, line oozing, vaginal bleeding, skin bleeding, mild hematemesis, melena, and mild hematuria). A slowly decreasing hematocrit level in a BMT patient is expected secondary to treatment induced aplasia in combination with multiple blood draws. Hemorrhage causing rapid decreases in hematocrit level necessitating 1 or more units of RBC transfusions per day over the expected rate of an individual or failure to obtain a posttransfusion increment while actively bleeding resulted in a score 3. Life-threatening hemorrhage defined as either massive bleeding causing severe hemodynamic compromise or bleeding into a vital organ (eg, intracranial hemorrhage, pericardial, and DAH) resulted in score 4.

The daily scores are recorded with a brief clinical description in the transfusion history report of each patient. These reports were reviewed for all 1,402 patients for primary identification of bleeding within 100 days after BMT.

The policy of transfusions along the study period has been as follows. Prophylactic platelet transfusions were administered to patients when the morning platelet count was equal to or less than 20,000. Patients with daily score 2, were usually transfused to keep their platelets level greater than 30,000. In cases of active bleeding (score 3), the threshold was usually set on 50,000. Higher thresholds could be set in life-threatening hemorrhage. Packed RBC were transfused prophylactically to maintain a hematocrit level equal to or greater than 25% in nonbleeding patients. Patients with active bleeding received RBC transfusions as needed, based on the intensity and rate of bleeding and the hemodynamic situation.

Preference for apheresis single donor products was always given to the BMT patients. During the years 1986 through 1988, 60% of transfusions were apheresis products. The yearly percentage of apheresis products has constantly grown; by 1995, 96% of platelet transfusions were single donor apheresis, whereas only 4% were from random donors.

Defining a bleeding episode and inclusion criteria. The bleeding episodes were defined by assembling the daily scores as continuous events within 100 days from marrow transfusion (which was considered day 0). The minimal episode to be included in the study was a daily score 2 for at least 4 of 7 days (4/7). Any score 3 or 4 was included. The definition of minimal event was also used for determining the episode boundaries (initiation and cessation). Because of fluctuating daily intensity of bleeding, a major episode (moderate or severe bleeding, see below) was permitted to have up to a 1-week gap of no bleeding within its boundaries.

Grading the bleeding episodes severity. Episodes fitting the criteria described above were then retrospectively categorized into minor, moderate, and severe. Minor bleeding included daily score 2 for up to 7 days. Moderate bleeding was defined as more than a week of daily score 2 or 1 to 2 days of score 3 (within 7 days). Severe bleeding included score 3 for 3 or more days (within 7 days) or any score 4. This categorization characterizes the pattern of bleeding episode by the maximal score, bleeding frequency, and duration.

The daily bleeding score is regularly assigned by a transfusion

coordinator assigned to the BMT unit for rotational period. To reduce differences due to personal subjectivity in daily score selection, moderate and severe episodes (328 cases) were reviewed with clinical reports (discharge summaries, patients charts, clinical notes etc) and compared with the original scores. In cases of discrepancy, reevaluation of the daily scores was performed by one experienced member of the transfusion unit (V.S.). After this review, 15 of 328 cases (4.6%) had a change in the original category of intensity, and 22 of 328 cases (6.7%) had completion of daily scores around terminal course.

The method described above was used to identify and quantify bleeding from any site with the exception of pulmonary hemorrhage, for which definition excluded evidence of infection, as broadly used.^{15,17,24,26,33} Most cases of pulmonary hemorrhage were confirmed by histology and were retrospectively reviewed by a pathologist.

Specification of the Bleeding Site

Moderate and severe episodes were grouped to learn about the effect of sites (source and number of sites) on survival. Exclusion of minor bleeding enabled us to focus the analysis on the range of clinically significant bleeding.

The bleeding sites were detailed as GI, urinary, pulmonary, IC, and bleeding relating to procedure (eg, liver biopsy, chest tube insertion, etc). Other was termed for epistaxis, vaginal, skin, cardiac, abdominal, and several sites (representing an overall moderate episode from several sites, each minor by intensity).

The number of sites was counted as 1, 2, 3 and more (3+) in cases in which the episodes could clearly be separated by initiation dates. Multiple bleeding was defined as simultaneous initiation of 3 or more sites. A site was counted only if the bleeding intensity at that site was moderate or severe.

Survival Assessment

Survival after BMT was calculated for 1,353 patients with outcome endpoints of death or follow-up ending in December 1995. Forty-nine cases were not included in the survival analysis: 6 patients who had nonspontaneous (procedural) bleeding and 43 patients for whom there was no follow-up data. Overall survival in patients who experienced bleeding within 100 days after transplantation (BLD) was compared with survival of patients who did not bleed (NBLD) to learn about the long-term consequences of bleeding.

The timing relation of the bleeding event to survival endpoints (temporal association) was investigated by the interval between the last day of bleeding to outcome endpoints. The temporal analysis was assessed by three outcome intervals: death within 0 to 5 days (from the last day of bleeding), death within 6 to 30 days, and any outcome (live or death) occurring within more than 30 days. It should be noted that this interval refers to the latest significant bleeding event, however this event may not consist of the maximal scores.

Analysis of Cause of Death (COD)

All patients who died were assigned a cause of death by the BMT staff and a pathologist. Two hundred sixty-two patients (18.7%) died within 100 days after BMT (BLD and NBLD); a COD was assigned in 244 cases. In 53 cases in which the COD was not available, retrospective assessment of COD was performed by one senior physician of the BMT staff, and 258 patients were finally included in the analysis. (The 4 patients who were not included were 2 in whom data was not available and 2 for whom the COD could not be determined.) The analysis of COD was performed to learn about fatal bleeding in early mortality and about the frequency of other COD in BLD versus NBLD patients.

Clinical Data Extraction and Processing

Patients' demographics, including referring diagnosis, stage of disease, BMT type, preparative regimen, age, and sex, were obtained from the computed database of the oncology center. Bleeding was identified

by the daily scores in the transfusion report of each patient and was verified by RBC transfusion history reports. In addition to the daily bleeding scores, bleeding was screened in quality assurance reports of diagnostic discharge codes. Moderate and severe episodes were reviewed for site specification by discharge summaries, relevant radiology and pathology notes, postmortem reports, discharge summary codes, and patients' charts. Outcome data for survival analysis were updated by recent follow-up, day of last contact, or death dates.

Statistical Analysis

Patients were categorized into groups based on factors including diagnosis, stage of disease, and BMT type. The group of BLD was compared with NBLD using the χ^2 test. Kaplan-Meier estimates of survival⁴¹ were computed from the time of BMT, for which marrow infusion was considered day 0. Survival curves for different groups were compared using the log-rank test.⁴²

RESULTS

Incidence

Acute bleeding was identified in 476 patients, defining an overall incidence of 34% (476/1,402). Six of the 476 patients had procedure-related bleeding without other spontaneous bleeding, and therefore were excluded from further analysis. Minor bleeding was seen in 10.6%, moderate bleeding was seen in 11.3%, and severe bleeding was seen in 12% of all BMT patients. The yearly incidence (considering 1986 through 1994) ranged from 31.8% to 42.4%, with similar yearly distribution of intensity ($P = .43$).

In 328 patients who experienced spontaneous moderate and severe episodes, GI bleeding was found in 61.3% (201/328), HC bleeding in 27.4% (90/328), IC bleeding in 8.8% (29/328), and pulmonary hemorrhage in 10% (33/328). DAH (29 cases) was found in 3% of allogeneic (14/469), 1.2% of autologous (11/887), and 16.7% of unrelated transplants (4/24). Multiple bleeding affected 8.8% (29/328), bleeding related to procedure (additional to other spontaneous bleeding) was found in 3.4% (11/328), other sites accounted for 14% (46/328), and in 4.6% (15 cases) the site was not identified.

Sixty-one percent (200/328) of moderate and severe episodes had bleeding from 1 site, 17.4% (57/328) had bleeding from 2 sites, 3% (10/328) had bleeding from 3 or more sites, and 6.4% (21/328) had simultaneous multiple bleeding (initiating simultaneously from multiple sites). In 40 cases the number of sites was not counted (11 cases had several sites, 14 cases could not be well described by this categorization, and the site was not identified in 15 cases). The number of sites detailed by the bleeding severity is shown in Table 2. The bleeding sites are detailed by severity (in cases of 1 site only) are shown in Table 3.

Moderate and severe bleeding was more common in allogeneic (31.0%, $P < .0001$) and unrelated transplants (62.5%, $P < .0001$) compared with autologous BMT (18.5%). Minor bleeding was found in 9.3% of allogeneic, 11.8% autologous, and 0% of unrelated patients.

Although the incidence of moderate and severe bleeding significantly varied among diagnoses (higher incidence in AML and CML [32.0% and 38.2%, respectively] and lower incidence in breast cancer [6.5%] when compared with the rest of the diseases), bleeding incidence in good- and poor-risk prognosis groups was similar within each hematologic diagnosis. Inci-

Table 2. The Number of Sites Detailed by the Bleeding Severity for 288 Patients

	1 Site	2 Sites	3+ Sites	Multiple
Moderate	104	17	1	8
Severe	96	40	9	13
Total	200	57	10	21

Sixty-one percent (200/328) of moderate and severe bleeding episodes within the first 100 days after BMT had bleeding from 1 site, 17.4% (57/328) had 2 bleeding sites, 3% (10/328) had 3 or more sites, and 6.4% (21/328) had multiple bleeding (initiating simultaneously from multiple sites). Significant correlation was found between the number of sites and the bleeding severity ($P = .0022$).

dence of moderate and severe bleeding in good- versus poor-risk groups was, for acute lymphoblastic leukemia (ALL), 17.6% and 23.3%; for acute myeloid leukemia (AML), 32.1% and 31.8%; for CML, 37.2% and 42.4%; for HD, 30.6% and 30.4%; and for NHL, 20.1% and 27.6% respectively (in all, no significant difference).

Outcome

Bleeding was associated with significantly reduced survival ($P < .0001$) in an analysis of the entire BMT population. In allogeneic BMT, the median survival in NBLD ($n = 260$) was greater than 33 months, whereas the median in BLD ($n = 184$) was 3.5 months ($P < .0001$; Fig 1). In autologous BMT, the median survival in NBLD ($n = 612$) was 42.9 months, whereas in BLD ($n = 270$) the median was 11.0 months ($P < .0001$; Fig 1). The BLD allogeneic survival curve was found to be significantly different from the BLD autologous survival curve ($P = .0002$). In unrelated BMT, the median in NBLD ($n = 9$) was 12.3 months versus 1.9 months in BLD ($n = 15$; $P = .04$).

Significantly decreased survival in BLD compared with NBLD was found in each disease category, except MM. The median values of BLD and NBLD in ALL were 5.0 and 26.6 months, respectively ($P = .0007$); in AML, 8.3 versus 16.3 ($P = .0097$); and in NHL, 7.1 versus 83.3 ($P < .0001$). In CML, the median survival in BLD was 3.0 months, whereas 60% of NBLD lived more than 32.8 months ($P < .0001$). In HD, the median survival in BLD was 3.8 months, whereas 61% of NBLD lived more than 42.9 months ($P < .0001$). In AA, the median survival in BLD was 2.0 months, whereas 84% of NBLD lived more than 6 months ($P = .0054$). In breast cancer, the median survival in BLD was 12.0 months, whereas 74% of NBLD lived more than 23.1 months ($P < .0001$). In MM, the median in BLD was 2.4 compared with 22.0 in NBLD ($P = .64$); however, interpretation should consider the sample size.

The adverse effect of bleeding was shown in both good- and poor-risk prognosis within each diagnosis. Table 4 summarizes

Table 3. The Main Bleeding Sites Detailed by the Bleeding Severity

	GI	HC	IC	Pulmonary
Moderate	61	29	0	3
Severe	63	9	14	8
Total	124	38	14	11

For 187 cases with 1 bleeding site, significant association was found between the sites and the bleeding severity ($P < .0001$).

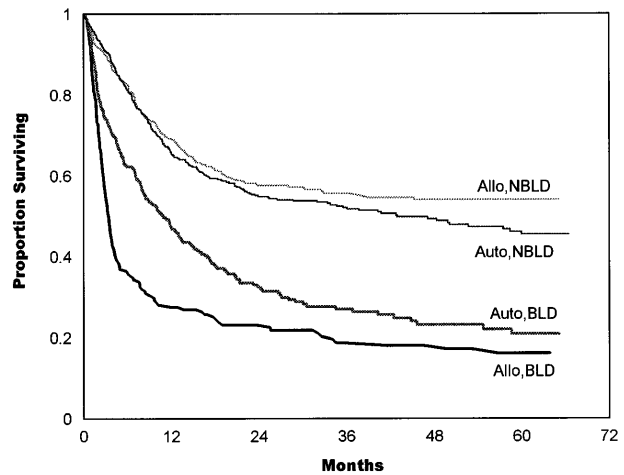


Fig 1. Survival estimates for allogeneic (Allo) and autologous (Auto) transplants comparing patients who bled (BLD) with patients who did not bleed within 100 days after transplantation (NBLD). In allogeneic patients, the median survival in 260 NBLD was greater than 33 months, compared with 3.5 months in 184 BLD ($P < .0001$). In autologous patients, median survival in 612 NBLD was 42.9 months, compared with 11 months in 270 BLD ($P < .0001$).

the median values for each disease category for good- and poor-risk, BLD versus NBLD groups.

Characteristics of Bleeding as Predictors of Survival

The bleeding intensity closely correlated with survival estimates for both allogeneic (Fig 2) and autologous (Fig 3) patients. The median survival in allogeneic minor BLD was 10 months, 3.5 months in moderate, and 2.8 months in severe BLD. The difference between NBLD and minor bleeding was not significant statistically ($P = .089$). Significant difference was found between minor versus moderate bleeding ($P < .001$) and between moderate and severe bleeding ($P = .025$). Median survival in autologous minor bleeding was 17.3 months, 13.5 months in moderate, and 5.2 months in severe bleeding. A significant difference was found between NBLD and minor bleeding ($P = .0004$). Minor versus moderate did not differ significantly ($P = .59$), but moderate versus severe bleeding was significantly different ($P = .023$).

The number of bleeding sites also correlated with survival, as shown in Fig 4. Median survival in patients with 1 bleeding site was 5.7 months, compared with 2.8 months in 2 sites and 2.3

Table 4. Median Survival for Diseases by Risk Prognosis Status in Bleeding Versus Nonbleeding Patients

	Good-Risk Prognosis		Poor-Risk Prognosis	
	NBLD	BLD	NBLD	BLD
ALL	17.9	10.9 ($P = .33$)	30.5	3.5 ($P < .0001$)
AML	20.6	11.8 ($P = .055$)	13.9	7.8 ($P = .091$)
CML	>39	3.8 ($P < .0001$)	7.2	1.8 ($P = .0002$)
HD	>87.8	4.0 ($P < .0001$)	22.0	3.6 ($P = .006$)
NHL	>58.8	19.6 ($P = .0013$)	4.1	2.5 ($P = .0063$)

The adverse effect of bleeding was shown in both good- and poor-risk prognosis within each diagnosis. The median is given in months. P values compare BLD and NBLD groups in each risk group.

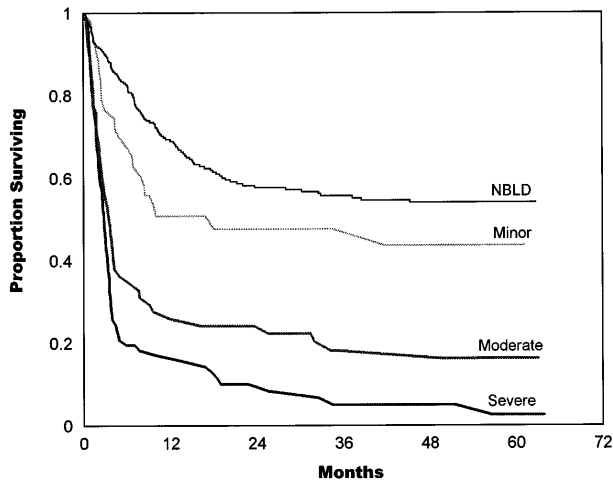


Fig 2. In allogeneic patients, survival estimates highly correlated with bleeding intensity. The median survival in allogeneic minor bleeding was 10 months, 3.5 months in moderate, and 2.8 months in severe bleeding. The difference between NBLD and minor bleeding was not significant statistically ($P = .089$); a significant difference was found between minor versus moderate ($P < .001$) and between moderate versus severe bleeding ($P = .025$). NBLD, patients who did not bleed within 100 days after transplantation.

months in 3+ sites. Simultaneous multiple bleeding had a median of 1.1 months. A significant difference was found between 1 and 2 bleeding sites ($P = .0001$) and between 2 and multiple sites ($P = .0001$). The difference between 2 and 3+ sites was not significant ($P = .1$).

Analysis by site (in episodes of 1 site) showed that the outcome of GI bleeding and HC was not statistically different ($P = .54$), with median values of 5.2 and 7.2 months,

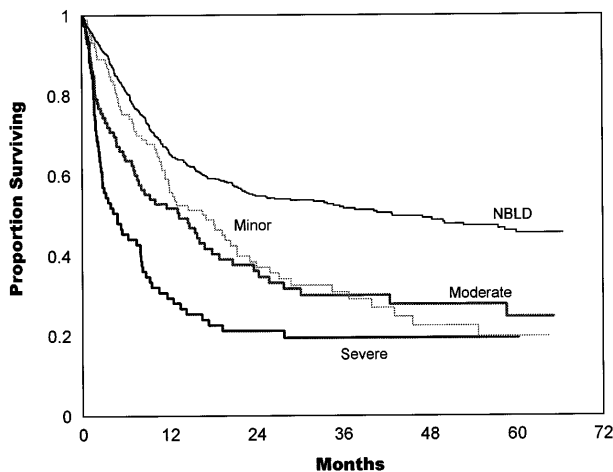


Fig 3. Survival estimates by bleeding intensity in autologous patients. Median survival in minor bleeding was 17.3 months, 13.5 months in moderate, and 5.2 months in severe bleeding. Significant differences were found between NBLD and minor bleeding ($P = .0004$) and between moderate versus severe bleeding ($P = .023$). Minor versus moderate bleeding was not statistically significant ($P = .59$). NBLD, patients who did not bleed within 100 days after transplantation.

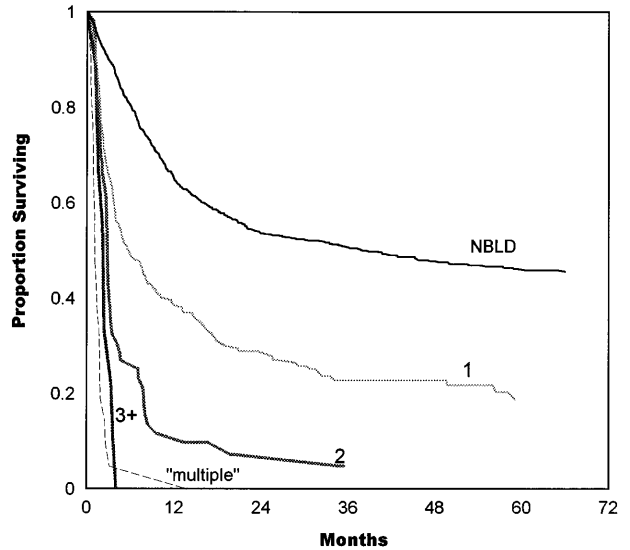


Fig 4. Survival estimates as a function of the number of bleeding sites. Median survival in patients with 1 bleeding site was 5.7 months, 2.8 months in 2 sites, and 2.3 months in 3+ sites. Simultaneous initiation of multiple bleeding had a median of 1.1 months. A significant difference was found between 1 and 2 bleeding sites ($P = .0001$) and between 2 and multiple sites ($P = .0001$). The difference between 2 and 3+ sites was not significant ($P = .1$). NBLD, patients who did not bleed within 100 days after transplantation.

respectively. Median survival in IC hemorrhage was 2.5 months and in pulmonary hemorrhage was 1.3 months ($P = .18$; Fig 5).

Analysis of the temporal association of bleeding to outcome endpoints showed that, the more severe the overall bleeding episode was, the stronger was the association to death in both autologous and allogeneic patients (Table 5A and B).

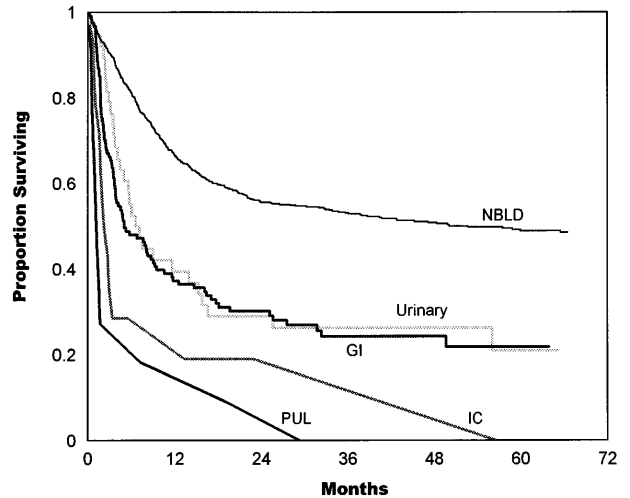


Fig 5. Survival estimates given by the bleeding site (in episodes of 1 site only). The median survival in GI bleeding was 5.2 months. The median survival in urinary bleeding (HC) was 7.2 months, which is not statistically different from GI bleeding ($P = .54$). The median survival in IC hemorrhage was 2.5 months, which is not statistically different from pulmonary (PUL) hemorrhage (1.3 months, $P = .18$). NBLD, patients who did not bleed within 100 days after transplantation.

Table 5. Temporal Association of Bleeding to Survival

	Outcome by Intervals From the Last Day of BLD Episode		
	Death Within 0-5 d	Death Within 6-30 d	Alive >30 d
A. Autologous BMT			
Minor BLD	5 (4.8%)	4 (3.8%)	95 (91.4%)
Moderate BLD	15 (17.4%)	6 (7%)	65 (75.6%)
Severe BLD	34 (45.3%)	2 (2.7%)	39 (52%)
B. Allogeneic BMT			
Minor BLD	5 (11.9%)	2 (4.8%)	35 (83.3%)
Moderate BLD	29 (47.5%)	5 (8.2%)	27 (44.3%)
Severe BLD	61 (79.2%)	4 (5.2%)	12 (15.6%)

The intervals between the last day of bleeding to outcome estimates (death within 30 days or any outcome longer than 30 days) showed that, the more severe the overall bleeding episode was, the stronger was the timing association to death, as analyzed for 275 autologous and 180 allogeneic patients.

Of 258 patients who died within 100 days after transplantation, 175 were BLD (21 minor, 59 moderate, and 92 severe) and 87 patients were NBLD. Bleeding was listed as the COD in 13 of 258 (5%): 12 patients who were identified as BLD and 1 patient who was classified as NBLD (a patient who relapsed and died at home). Death was commonly attributed to infections (26.3% of BLD and 18.4% of NBLD), interstitial pneumonia (12% BLD and 11.4% NBLD), and regimen-related toxicity (14.3% BLD and 19.3% NBLD) in both autologous and allogeneic patients. Early relapse was seen in 31.8% of NBLD and in 8.6% of BLD patients. Graft-versus-host disease (GVHD) as main COD was significantly higher in allogeneic BLD (35.6%) compared with allogeneic NBLD (11.1%).

DISCUSSION

Investigation of bleeding after BMT has been usually approached by site-specific studies. The current study summarizes the extent and clinical significance of acute bleeding of all sites as studied in a population of 1,402 patients receiving transplants during the last 10 years at a single institution. Acute bleeding within 100 days after BMT was found to be a common complication with profound association to reduced survival.

Bleeding Incidence

The incidence by site of moderate and severe bleeding of 14.4% GI bleeding, 6.4% HC, 2.8% pulmonary hemorrhage, and 2% IC hemorrhage is within the range of reports found in the literature,^{2,6,15,18,19,29,30} although comparison should consider different methodologies in bleeding definitions (especially with HC), time span from transplantation, and the structure of populations. The report by Tornebohm et al³¹ of a 19% incidence of terminal hemorrhages (considering all bleeding sites) is close to the 24% of moderate and severe bleeding in our study.

Although the analysis of the number of sites showed that 60% of moderate and severe episodes had a solitary bleeding source, in some of these cases additional minor bleeding was noticed in sites other than the main bleeding site. These bleeding events were not represented in the count of sites. Hence, it is possible that bleeding in many cases is a symptom of systemic under-

lying disorder rather than a strictly local complication, reflecting a correlation between the extent of underlying damage and outcome after transplantation. Epithelial and endothelial cell damage in BMT patients was previously suggested through different mechanisms.^{26,33,34,43-46} Further investigation considering all bleeding sites is needed to explore this direction in the pathophysiology of bleeding.

Conflicting association of bleeding with marrow source was previously reported.^{1,6-10,15,19-21,24,25,27,30,31} The higher incidence in allogeneic and unrelated BMT compared with autologous transplants should be further investigated in relation to GVHD and infectious complications during profound immunosuppression. GVHD in association with bleeding was reported with conflicting conclusions,^{2,3,8,9,33,47-50} and this is an area we study further.

Within each hematologic diagnosis, no association was noticed between bleeding incidence and status of disease. These findings suggest that bleeding does not simply represent the high-risk individuals on the basis of disease status. Therefore, the association of bleeding with reduced survival, as observed in this study, cannot be attributed to the poor prognosis patients groups.

Outcome of Bleeding After BMT

The association of bleeding to reduced outcome was evident by the analysis of overall survival in BLD compared with NBLD and by the strong association to mortality in the temporal analysis. Nevertheless, hemorrhage was listed as a primary COD in only the minority of BLD. The relatively low incidence of fatal bleeding compared with the incidence of clinically moderate and severe bleeding may reflect that bleeding in most cases was considered secondary to other major complication. In these cases, the association to mortality is probably combined with influences of coexisting acute complications. This hypothesis is compatible with our clinical impression that most deaths cannot be simply attributed to the bleeding episode. Nevertheless, a major consequence of this study is that bleeding is a potential indicator of patients at risk and a prognostic factor for poor survival.

The differentiative pattern of reduced survival defined by bleeding was shown with survival analysis by BMT type, disease, and stage of disease. The significant difference between BLD allogeneic and autologous survival curves may reflect the influence of acute GVHD,⁵¹⁻⁵⁴ which was found frequent in BLD in the COD analysis, and may correlate with differences in overall early toxicity between allogeneic and autologous transplantations.⁵⁵⁻⁵⁸

Bleeding occurrence had changed patients initial categorization of risk in each disease category. For example, in AML, BLD good-risk patients had similar outcome as NBLD poor-risk patients. In CML and HD, BLD good-risk patients had even worse outcome compared with NBLD poor-risk patients. Only in NHL, good-risk patients (BLD and NBLD) had consistently better survival than poor-risk patients, although bleeding significantly reduced survival in both groups. ALL poor-risk NBLD patients had better survival than good-risk patients (BLD and NBLD), which may reflect the influence of age on survival (48 of 74 poor-risk patients were pediatric, compared with 6 of 51 good-risk patients). The bleeding poor-risk patients in all

diseases had the worst survival. These results suggest that bleeding, and possibly risk factors for bleeding, once identified, should be considered in clinical evaluation of patient risk after BMT.

The adverse effect of bleeding on survival was predicted by the bleeding intensity, the number of sites, and the bleeding source, which were found to be highly correlated variables. The differences in early and long-term survival between minor, moderate, and severe episodes indicate the clinical relevance of bleeding grading, as was defined in this study. Whereas moderate and severe bleeding were associated with early mortality, it is of interest that minor bleeding was also an indicator of poor prognosis.

Analysis by the number of sites suggests that outcome assessment should account for all expressions of bleeding, because significant differences in survival were found between 1, more than 1 site, and simultaneous multiple bleeding.

Because most outcome assessments of bleeding in the literature relate to the immediate course after the cessation of bleeding episode, the effect on overall survival is not always clear. In the cases of DAH and IC parenchymal hemorrhage, grave outcome immediately affected survival, as reported earlier.^{15,16,24} However, this study associates GI bleeding and HC (the last rarely terminates with death) with reduced survival. This association with HC was previously observed by Yang et al.¹⁰ Thus, we conclude that bleeding from all sites is associated with reduced survival.

Bleeding was infrequently discussed in reviews of acute complications after BMT.⁵⁹⁻⁶² Possible etiologies and risk factors, such as preparative regimen toxicity, marrow source, thrombocytopenia, coagulation disorders, infections, GVHD (in part previously mentioned), and more, were previously discussed.^{1,3,8,9,17,18,24,26,30,32,49,63-66} The spectrum of bleeding that is included in this study probably represents many of these causes. The COD analysis shows some of the diverse complications coexisting in BLD; however, this study has initially concentrated on defining the extent and significance of acute bleeding. Further exploration of potential mechanisms is essential to the understanding of whether bleeding is a specific or nonspecific process in clinical deterioration after transplantation and to the study of the association with early mortality.

The association of bleeding to reduced survival may also be tested in relation to adverse effects of allogeneic blood transfusions. Transfusion reactions, associated infections, and allo-immunization are among complications that potentially can contribute to reduced outcome. Transfusion-induced immunomodulation after perioperative transfusions has been suggested in association with reduced survival and recurrence of malignancy.⁶⁷⁻⁷⁰ However, the role of transfusion-related complications in the course of BLD necessitates careful analysis, because all patients after transplantation are heavily transfused.

Study Limitations

The scoring methodology, although assigned by different personnel, is based on well-defined criteria and was practiced consistently over the study period. The final categorization into mild, moderate, and severe episodes was based on the pattern of intensity in accordance with clinical reports. Consequently, a different grading scheme may result in somewhat different

incidence, yet the profound differences in survival of the three bleeding grades, compared with NBLD and with each other, strongly support the adequacy of our grading scheme. Bleeding categorization did not include parameters of patients outcome; hence, the association with reduced survival was not biased by our definition methodology.

Because the daily scores are assigned to hospitalized patients, outpatients may have potentially been underdetected for minor bleeding. However, outpatients experiencing significant bleeding were hospitalized, re-entering the scoring follow-up. Therefore, we believe that scores 3 and 4, generally described as moderate and severe bleeding, are accurately reported. Fatal bleeding may be underestimated if bleeding occurred in nonhospitalized patients or when the terminal bleeding event occurred after the last score was recorded. In this case, autopsy study in NBLD would review the extent of terminal hemorrhage and may result in possibly higher association of bleeding to death.

The importance of our results primarily relates to patients' care. If bleeding is a marker of multifactorial clinical deterioration, protracted supportive care to prevent bleeding would be futile. However, if bleeding has a direct role in deterioration, aggressive treatment against underlying mechanisms of bleeding may yield a significant improvement in survival after BMT.

ACKNOWLEDGMENT

The authors thank Dr Michael Grever, Kongyan Pan, Adriane Hill, Henri Hammond, Regina White, Joyce Kane, Vanessa Williams, Dorothy Williams, Felicia Reeder, and the members of the blood transfusion service for their own individual contributions for this study.

REFERENCES

1. Kaur S, Cooper G, Fakult S, Lazarus HM: Incidence and outcome of overt gastrointestinal bleeding in patients undergoing bone marrow transplantation. *Dig Dis Sci* 41:598, 1996
2. Shuhart MC, McDonald GB: Gastrointestinal and hepatic complications, in Forman SJ, Blume KG, Thomas ED (eds): *Bone Marrow Transplant*. Cambridge, MA, Blackwell Scientific, 1994, p 454
3. Wolford JL, McDonald GB: Gastrointestinal bleeding after marrow transplant: A prospective study of risk factors, etiology, and outcome. *Gastroenterology* 92:1697, 1987 (abstr)
4. Vishny ML, Blades EW, Creger RJ, Pharm D, Lazarus HM: Role of upper endoscopy in evaluation of upper gastrointestinal symptoms in patients undergoing bone marrow transplantation. *Cancer Invest* 12:384, 1994
5. Marmaduke DP, Greenson JK, Cunningham I, Herderick EE, Cornhill JF: Gastric vascular ectasia in patients undergoing bone marrow transplantation. *Am J Clin Pathol* 102:194, 1994
6. Letendre L, Hoagland HC, Gertz MA: Hemorrhagic cystitis complicating bone marrow transplantation. *Mayo Clin Proc* 67:128, 1992
7. Brugieres L, Hartmann O, Travagli JP, Benhamou E, Pico JL, Valteau D, Kalifa C, Patte C, Flamant F, Lemerle J: Hemorrhagic cystitis following high-dose chemotherapy and bone marrow transplantation in children with malignancies: Incidence, clinical course, and outcome. *J Clin Oncol* 7:194, 1989
8. Sencer SF, Haake RJ, Weisdorf DJ: Hemorrhagic cystitis after bone marrow transplantation. *Transplantation* 56:875, 1993
9. Russell SJ, Vowels MR, Vale T: Haemorrhagic cystitis in paediatric bone marrow transplant patients: An association with infective agents, GVHD and prior cyclophosphamide. *Bone Marrow Transplant* 13:533, 1994

10. Yang CC, Hurd DD, Case LD, Assimos DG: Hemorrhagic cystitis in bone marrow transplantation. *Urology* 44:322, 1994
11. Young SL, Payne C, August CS: Cyclophosphamide-induced hemorrhagic cystitis in children undergoing bone marrow transplantation. *Am J Pediatr Hematol Oncol* 12:111, 1990 (abstr)
12. Thomas AE, Patterson J, Prentice HG, Brenner MK, Ganczowski M, Hancock JF, Pattinson JK, Blacklock HA, Hopewell JP: Hemorrhagic cystitis in bone marrow transplantation patients: Possible increased risk associated with prior busulphan therapy. *Bone Marrow Transplant* 1:347, 1987
13. Atkinson K, Biggs JC, Golovsky D, Concannon A, Dodds A, Downs K, Ashby M: Bladder irrigation does not prevent hemorrhagic cystitis in bone marrow transplant recipients. *Bone Marrow Transplant* 7:351, 1991
14. deVries CR, Freiha FS: Hemorrhagic cystitis: A review. *J Urol* 143:1, 1990
15. Robbins RA, Linder J, Stahl MG, Thompson AB 3d, Haire W, Kessinger A, Armitage JO, Arneson M, Woods G, Vaughan WP, Rennard SI: Diffuse alveolar hemorrhage in autologous bone marrow transplant recipients. *Am J Med* 87:511, 1989
16. Jules-Elysee K, Gulati S, Stover DE, White DA: Pulmonary complications in autologous bone marrow transplantation (AuBMT). *Am Rev Respir Dis* 141:A604, 1990 (abstr)
17. Metcalf JP, Rennard SI, Reed EC, Haire WD, Sisson JH, Walter T, Robbins RA: Corticosteroids as adjunctive therapy for diffuse alveolar hemorrhage associated with bone marrow transplantation. *Am J Med* 96:327, 1994
18. Chao NJ, Duncan SR, Long GD, Horning SJ, Blume KG: Corticosteroid therapy for diffuse alveolar hemorrhage in autologous bone marrow transplant recipients. *Ann Intern Med* 114:145, 1991
19. Mulder PO, Meinesz AF, de Vries EG, Mulder NH: Diffuse alveolar hemorrhage in autologous bone marrow transplant recipients. *Am J Med* 90:278, 1991 (letter)
20. Seiden MV, Elias A, Ayash L, Hunt M, Eder JP, Schnipper LE, Frei E 3d, Antman KH: Pulmonary toxicity associated with high dose chemotherapy in the treatment of solid tumors with autologous marrow transplant: An analysis of four chemotherapy regimens. *Bone Marrow Transplant* 10:57, 1992
21. Quabeck K: The lung as a critical organ in marrow transplantation. *Bone Marrow Transplant* 14:S19, 1994 (suppl 4)
22. Dunagan DP, Baker AM, Hurd DD, Haponik EF: Bronchoscopic evaluation of pulmonary infiltrates following bone marrow transplantation. *Chest* 111:135, 1997
23. Breuer R, Lossos IS, Berkman N, Or R: Pulmonary complications of bone marrow transplantation. *Respir Med* 87:571, 1993
24. Soubani AO, Miller KB, Hassoun PM: Pulmonary complications of bone marrow transplantation. *Chest* 109:1066, 1996
25. Schmidt-Wolf I, Schwerdtfeger R, Schwella N, Gallardo J, Schmid H-J, Huhn D, Siegert W: Diffuse pulmonary alveolar hemorrhage after allogeneic bone marrow transplantation. *Ann Hematol* 67:139, 1993
26. Srivastava A, Gottlieb D, Bradstock KF: Diffuse alveolar haemorrhage associated with microangiopathy after allogeneic bone marrow transplantation. *Bone Marrow Transplant* 15:863, 1995
27. Pomeranz S, Naparstek E, Ashkenazi E, Nagler A, Lossos A, Slavin S, Or R: Intracranial haematomas following bone marrow transplantation. *J Neurol* 241:252, 1994
28. Wiznitzer M, Packer RJ, August CS, Burkey ED: Neurological complications of bone marrow transplantation in childhood. *Ann Neurol* 16:569, 1984
29. Snider S, Bashir R, Bierman P: Neurologic complications after high-dose chemotherapy and autologous bone marrow transplantation for Hodgkin's disease. *Neurology* 44:681, 1994
30. Graus F, Saiz A, Sierra J, Arbaiza D, Rovira M, Carreras E, Tolosa E, Rozman C: Neurologic complications of autologous and allogeneic bone marrow transplantation in patients with leukemia: A comparative study. *Neurology* 46:1004, 1996
31. Tornebohm E, Lockner D, Paul C: A retrospective analysis of bleeding complications in 438 patients with acute leukaemia during the years 1972-1991. *Eur J Haematol* 50:160, 1993
32. Gmur J, Burger J, Schanz U, Fehr J, Schaffner A: Safety of stringent prophylactic platelet transfusion policy for patients with acute leukaemia. *Lancet* 338:1223, 1991
33. Wojno KJ, Vogelsang GB, Beschoner WE, Santos GW: Pulmonary hemorrhage as a cause of death in allogeneic bone marrow recipients with severe acute graft-versus-host disease. *Transplantation* 57:88, 1994
34. Agusti C, Ramirez J, Picado C, Xaubet A, Carreras E, Ballester E, Torres A, Battochia C, Rodriguez-Roisin R: Diffuse alveolar hemorrhage in allogeneic bone marrow transplantation, A postmortem study. *Am J Respir Crit Care Med* 151:1006, 1995
35. Mohrmann RL, Mah V, Vinters HV: Neuropathologic findings after bone marrow transplantation: An autopsy study. *Hum Pathol* 21:630, 1990
36. Patchell RA, White CL 3d, Clark AW, Beschoner WE, Santos GW: Neurologic complications of bone marrow transplantation. *Neurology* 35:300, 1985
37. Santos GW, Saral R, Burns WH, Braine HG, Sensenbrenner LL, Wingard JR, Yeager AM, Jones R, Ambinder RF, Rowley SD, May S, Vogelsang GB: Allogeneic, syngeneic and autologous marrow transplantation in the acute leukemias and lymphomas—Baltimore experiences. *Acta Haematol* 78:175, 1987 (suppl 1)
38. Miller CB, Piantadosi S, Vogelsang GB, Marcellus DC, Grochow L, Kennedy MJ, Jones RJ: Impact of age on outcome of patients with cancer undergoing autologous bone marrow transplant. *J Clin Oncol* 14:1327, 1996
39. May WS, Sensenbrenner LL, Burns WH, Ambinder R, Carroll MP, Jones RJ, Miller CB, Mellitis ED, Vogelsang GB, Wagner J, Wingard J, Yeager AM, Santos GW: Bone marrow transplantation for severe aplastic anemia using cyclosporine A. *Bone Marrow Transplant* 11:459, 1993
40. Civin CI, Trischmann T, Kadan NS, Davis J, Noga S, Cohen K, Duffy B, Groenewegen I, Wiley J, Law P, Hardwick A, Oldham F, Gee A: Highly purified CD34-positive cells reconstitute hematopoiesis. *J Clin Oncol* 14:2224, 1996
41. Kaplan EL, Meier P: Nonparametric estimation from incomplete observations. *J Am Stat Assoc* 53:457, 1958
42. Cox DR, Oakes D: *Analysis of Survival Data*. London, UK, Chapman & Hall, 1984
43. Catani L, Gugliotta L, Vianelli N, Nocentini F, Baravelli S, Bandini G, Cirio TM, Tura S: Endothelium and bone marrow transplantation. *Bone Marrow Transplant* 17:277, 1996
44. Wagner JE, Vogelsang GB, Beschoner WE: Pathogenesis and pathology of graft-vs.-host disease. *Am J Pediatr Hematol Oncol* 11:196, 1989
45. Barrett AJ: Graft-versus-host disease: A review. *J R Soc Med* 80:368, 1987
46. Beschoner WE, Farmer ER, Saral R, Stirling WL, Santos GW: Epithelial class II antigen expression in cutaneous graft-versus-host disease. *Transplantation* 44:237, 1987
47. Ost L, Lonnqvist B, Eriksson L, Ljungman P, Ringden O: Hemorrhagic cystitis—A manifestation of graft versus host disease? *Bone Marrow Transplant* 2:19, 1987
48. Turkeri LN, Lum LG, Uberti JP, Abella E, Momin F, Karanes C, Sensenbrenner LL, Haas GP: Prevention of hemorrhagic cystitis following allogeneic bone marrow transplant preparative regimens with cyclophosphamide and busulfan: Role of continuous bladder irrigation. *J Urol* 153:637, 1995
49. Bedi A, Miller CB, Hanson JL, Goodman S, Ambinder RF, Charache P, Arthur RR, Jones RJ: Association of BK virus with failure

of prophylaxis against hemorrhagic cystitis following bone marrow transplantation. *J Clin Oncol* 13:1103, 1995

50. Saito H, Oshimi K, Nagasako K, Yashiro K, Tanaka T, Toyoda C, Mizoguchi H: Endoscopic appearance of the colon and small intestine of a patient with hemorrhagic enteric graft-vs.-host disease. *Dis Colon Rectum* 33:695, 1990
51. Sullivan KM: Graft versus host disease, in Forman SJ, Blume KG, Thomas ED (eds): *Bone Marrow Transplant*. Cambridge, MA, Blackwell Scientific, 1994, p 339
52. Weisdorf D, Haake R, Blazar B, Miller W, McGlave P, Ramsay N, Kersey J, Filipovich A: Treatment of moderate/severe acute graft-versus-host disease after allogeneic bone marrow transplantation: An analysis of clinical risk features and outcome. *Blood* 75:1024, 1990
53. Vogelsang GB: Acute and chronic graft-versus host disease. *Curr Opin Oncol* 5:276, 1993
54. Gratwohl A, Hermans J, Apperley J, Arcese W, Bacigalupo A, Bandini G, di Bartolomeo P, Boogaerts M, Bosi A, Carreras E, Devergie A, Ferrant A, Fibbe WE, Frassony F, Gahrton G, Goldman J, Iriondo A, Jacobsen N, Kolb HJ, Link H, Mochallet M, Prentice HG, Reiffers J, Rhee FV, Ruutu T, Schwaighofer H, Vernant JP, de Witte T, Niederwieser D: Acute graft-versus-host disease: Grade and outcome in patients with chronic myelogenous leukemia, Working Party Chronic Leukemia of the European Group for Blood and Marrow Transplantation. *Blood* 86:813, 1995
55. Petersen FB, Bearman SI: Preparative regimens and their toxicity, in Forman SJ, Blume KG, Thomas ED (eds): *Bone Marrow Transplant*. Cambridge, MA, Blackwell Scientific, 1994, p 79
56. Bearman SI, Appelbaum FR, Buckner CD, Petersen FB, Fisher LD, Clift RA, Thomas ED: Regimen-related toxicity in patients undergoing bone marrow transplantation. *J Clin Oncol* 6:1562, 1988
57. Jones RJ: Autologous bone marrow transplantation. *Curr Opin Oncol* 5:270, 1993
58. Hunter AE, Haynes AP, Russell NH: Bone marrow transplantation: Current situation, complications and prevention. *J Antimicrob Chemother* 36:119, 1995 (suppl B)
59. Champlin RE, Gale RP: The early complications of bone marrow transplantation. *Semin Hematol* 21:101, 1984
60. Storb R: Bone marrow transplantation. *Transplant Proc* 27:2649, 1995
61. Tabbara IA: Allogeneic bone marrow transplantation: Acute and late complications. *Anticancer Res* 16:1019, 1996
62. Sullivan KM, Storb R: Allogeneic marrow transplantation. *Cancer Invest* 2:27, 1984
63. Beutler E: Platelet transfusions: The 20,000/ μ L trigger. *Blood* 81:1411, 1993
64. Gaydos LA, Freieich EJ, Mantel N: The quantitative relation between platelet count and hemorrhage in patients with acute leukemia. *N Engl J Med* 266:905, 1962
65. Benson K, Fields K, Hiemenz J, Zorsky P, Ballester O, Perkins J, Elfenbein G: The platelet-refractory bone marrow transplant patient: Prophylaxis and treatment of bleeding. *Semin Oncol* 20:102, 1993 (suppl 6)
66. Bodensteiner DC, Tilzer LL, Adams ME, Bayer WL: Use of blood components in cancer patients with bleeding. *Hematol Oncol Clin North Am* 6:1375, 1992
67. Klein HG: Allogeneic transfusion risks in the surgical patient. *Am J Surg* 170:S21, 1995 (suppl 6A)
68. Wagner SJ, Friedman LI, Dodd RY: Transfusion-associated bacterial sepsis. *Clin Microbiol Rev* 7:290, 1994
69. Klein HG: Transfusion in transplant patients: The good, the bad, and the ugly. *J Heart Lung Transplant* 12:S7, 1993 (suppl 1)
70. Bordin JO, Blajchman MA: Immunosuppressive effects of allogeneic blood transfusions: Implications for the patient with a malignancy. *Hematol Oncol Clin North Am* 9:205, 1995