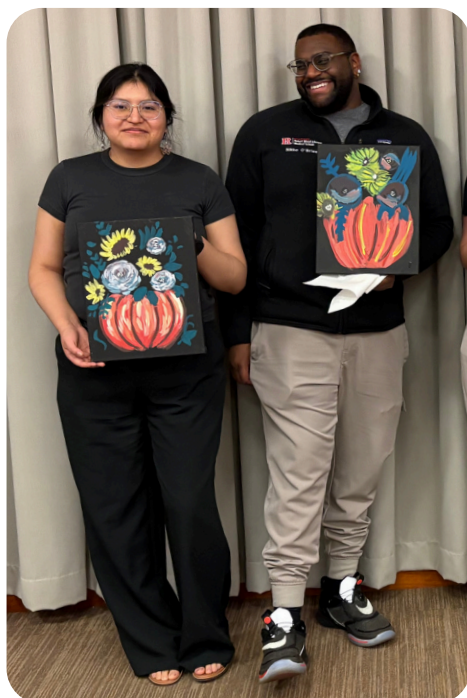


WINTER 2026

# RUTGERS YOUTH ENJOY SCIENCE

## RUYES WATCH



### IN THIS ISSUE:

- \* Rutgers Undergraduate Research Discovery Day
- \* Woodbridge High School Health Fair
- \* Field Trip to Rutgers Cancer Institute with Rutgers Youth Enjoy Science (RUYES)
- \* Application Information

### ABOUT RUYES

The Rutgers Youth Enjoy Science (RUYES) program seeks to encourage youth interested, in the biomedical sciences, to pursue cancer research and healthcare careers. RUYES empowers educators and students through experiential learning, professional development, and community outreach.

### APPLICATION

Applications are now closed  
Visit: [www.cinj.org/ruyes](http://www.cinj.org/ruyes)  
in December for information  
on Summer 2027  
applications. Email us at  
[RUYES@cinj.rutgers.edu](mailto:RUYES@cinj.rutgers.edu)

RUYES program is funded by the National Institutes of Health/National Cancer Institute grant 2R25CA247785.

# RUTGERS UNDERGRADUATE RESEARCH DISCOVERY DAY

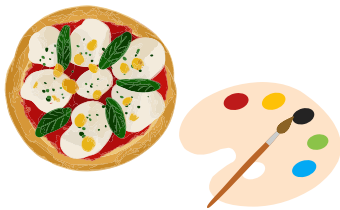
On September 19, 2025, Rutgers Youth Enjoy Science participated in Undergraduate Research Discovery Days (URDD) at Rutgers University.

RUYES undergraduate students, Maya Saez and Andrea Herrera presented their research and information about RUYES to students exploring research opportunities. Additional RUYES undergraduates from RUYES, Abigail Ibranke, Andrea Manoilova, and Saviour Ayim joined program coordinators to table, answer questions, and program specifics with interested students.

RUYES was featured in two of the panel discussions. Saviour was chosen to represent RUYES and offer perspective on what students should expect in their research experience. Cassandra Gabriele, Program Coordinator, offered advice on using resources to find opportunities, mindset, and exploring research areas.



- RUYES Program Coordinator, Cassandra Gabriele (top picture, far left) joins a panel discussion on research opportunities.
- RUYES undergraduate participant, Saviour Ayim, (bottom picture, far left) discusses research experience in the student panel discussion.



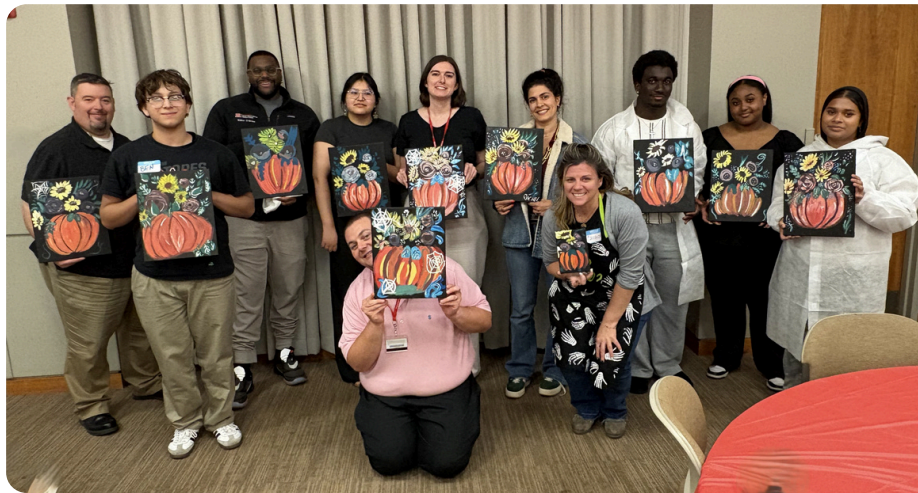
## PIZZA AND PAINT NETWORKING EVENT

*Rutgers Youth Enjoy Science (RUYES)  
Oncology Physician Training Initiative to Maximize Community Health Outcomes (OPTIM)  
Scholars and Early-Stage Advancement (SEA)*

Rutgers Youth Enjoy Science (RUYES) hosted an evening of Pizza and Painting at Rutgers Cancer Institute on October 22, 2025. This social networking event was opened for all the Scholars and Early Stage Advancement Initiative (SEA), Oncology Physician Training Initiative to Maximize Community Health Outcomes (OPTIM), and RUYES former and current teachers and students.

Program Coordinator, Cassandra Gabriele, instructed participants through the process of color mixing, brush sizes, and spatial judgement with their pumpkin creations.

Throughout the event, participant mingled, learned about each other's work and aspirations, and discussed shared experiences. With a wide range of experiential levels, all the participants stated their enjoyment at being able to connect in a relaxed and fun forum. **More events to come!**



# WOODBIDGE HIGH SCHOOL HEALTH FAIR

On November 18, 2025, Woodbridge High School under the direction of Maria Tolentino, RUYES Teacher and Woodbridge Youth Enjoy Science (W-YES) advisor presented a mini-health fair for its students.

Presentations were given by:

- Evelyn Arana, PhD, Cancer Prevention and Control Program at Rutgers Cancer Institute and RUYES Mentor spoke on her journey to medical school and research
- Cecilia Gomez, Community Cancer Control Specialist, Rutgers Cancer Institute *The Gut Microbiome and Cancer*

Research poster presentations were given by Rutgers Youth Enjoy Science (RUYES) participants:

- Jayla Vazquez of Woodbridge High School
- Andrea Herrera of Seton Hall
- Saviour Ayim of New Jersey City University



Rutgers Cancer Institute, Rutgers University and Woodbridge High School Students including the W-YES club had tables set up for additional information in various health fields, nutrition and RUYES program information.

## RUTGERS YOUTH ENJOY SCIENCE FIELD TRIPS

In December 2025 and March 2026, six high schools in collaboration with Rutgers Youth Enjoy Science(RUYES), visited Rutgers Cancer Institute for some hands-on learning, lab tours and activities. In attendance with their students were:

- Jose Marti STEM Academy, Natalia Coleman and Neril Sandeep, teachers and current RUYES trainees.
- New Brunswick Health and Sciences, Anju Batra, teacher and current RUYES trainee.
- High Tech High School -Hudson County Schools of Technology, Arun Srivastava, teacher and former RUYES trainee.
- Bayonne High School students, Georgeanne Osanya, teacher and former RUYES trainee.
- Woodbridge High School, Maria Tolentino, teacher and former RUYES trainee.
- Infiniti High School in Jersey City, Stacey McKoy, teacher and former RUYES trainee.
- Linden High School, Pramila R. Natarajan, teacher and former RUYES trainee.

Presentations included:

- Nur Zeinomar, PhD, MPH: *Cancer Epidemiology in Action: Insights from Breast Cancer Research*
- Shams G. Shams, MS, PhD: *Immune Check Inhibitors and Cancer*
- Deborah Toppmeyer, MD: *Cancer 0-60*

For the remainder of the time, students were engaged in activities such as experiments, learning proper pipetting technique, and laboratory tours at Rutgers Cancer Institute.

**A special thanks to our mentors and lab staff for allowing tours and presentations of their labs:**

- **Dr. Subhajyoti De and Sumayya Abdul Sattar Real**
- **Dr. Advaita Madireddy and Mrunmai Niljekar**
- **Dr. Cristina Montagna and Nellie Agosta**
- **Dr. Jian Cao and Connor Mattivi**
- **Dr. Wenwei Hu and Yiyun Shen and Yuhui Chu**



# RUTGERS YOUTH ENJOY SCIENCE FIELD TRIPS



WINTER

SUMMER 26



## APPLICATION PROCESS

**2026 RUYES APPLICATIONS ARE NOW CLOSED**  
Check our site in December for Summer 2027 information  
[www.cinj.org/ruyes](http://www.cinj.org/ruyes)

### Becoming a RUYES Participant

You must submit an application to be considered for the RUYES research experience. Once your application has been submitted, it will be reviewed by RUYES program staff, application review committee, and Rutgers Cancer Institute Principal Investigators (PI) interested in mentoring.

You will complete an interview during our match process, attend a mandatory onboarding seminar, and prepare the necessary paperwork to begin onboarding.

### EDUCATORS

STEM Educators from grades 6-12 and undergraduate faculty teaching students who would benefit from exposure to STEM fields (particularly biomedical, cancer research) can participate in mentored cancer research and curriculum development through the RUYES program

### UNDERGRADUATES

Undergraduates with limited research experience, or who have not had opportunity to participate in STEM, but have a strong interest in exploring the biomedical sciences and careers will have the opportunity to participate in mentored cancer research, professional development, and cancer-focused community outreach through RUYES.

### HIGH SCHOOL STUDENTS

Students who are at least 16 years old and have a strong interest in STEM careers and the sciences will have the opportunity to participate in mentored cancer research, professional development, and cancer-focused community outreach through RUYES.

### Application Timeline

-  **February 23**  
Early Decision
-  **February 27**  
Application Review
-  **March 4**  
First Round Decisions
-  **Early to Mid- March**  
Zoom Panel Interviews
-  **Early April**  
Onboarding information presentation
-  **Late March/Early April**  
Finalists and Mentors Interviews
-  **Mid- / Late June**  
RUYES Orientation Start Dates