



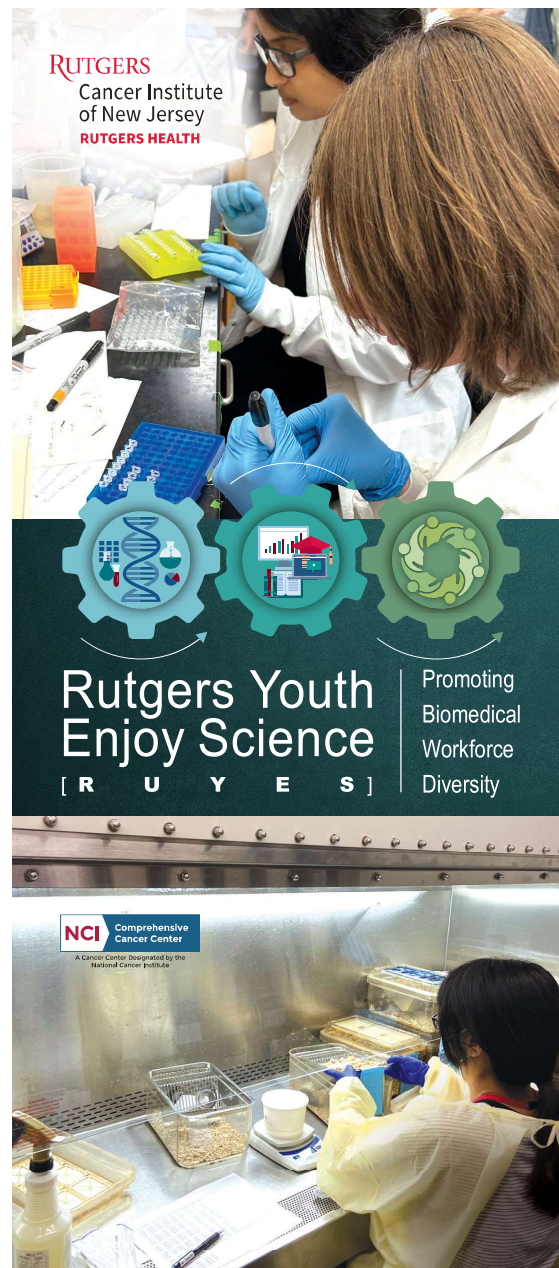
The Rutgers Youth Enjoy Science Program (RUYES): Cancer Research Experience, Professional Development, and Community Engagement for Youth from Under-represented Groups and High School Science Teachers

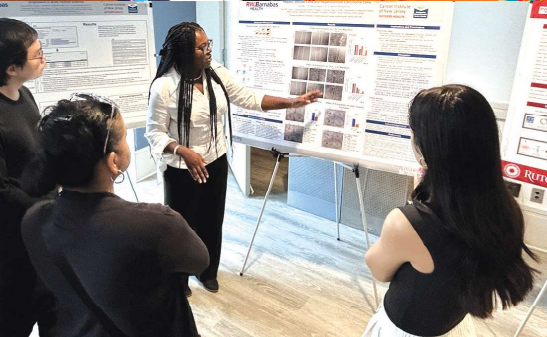
RUTGERS
Cancer Institute
of New Jersey
RUTGERS HEALTH



RUTGERS
Cancer Institute
of New Jersey
RUTGERS HEALTH

Rutgers Youth Enjoy Science
Education and Training Department
120 Albany Street • Tower 2 • 6th Floor
New Brunswick, NJ 08901

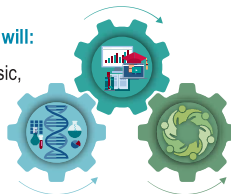




RUYES for Students

Students in the RUYES program will:

- Engage in mentor-supervised basic, clinical, or population-based cancer research for ten weeks (~350 hours) per summer for two consecutive years.
- Participate in co-curricular and professional development activities (~6 hours each week for 9 weeks over the summer).
- Participate in community outreach, professional development, and engagement activities for at least 2 weeks (~60-80 hours throughout the academic year).
- Receive compensation to participate in the program.



Program runs from last week of June through late August.

Who Is Eligible?

To be eligible for the RUYES program a student must be:

- A high school student at least 16 years old or an under graduate entering their freshman/sophomore year.
- A citizen or permanent resident (green card holder) of the United States.
- From any one of the following underrepresented backgrounds:
 - African American
 - Hispanic/Latino
 - Native American
 - Alaska Native
 - Pacific Islander
 - A first-generation college student.
 - From a lower socioeconomic background.



Contact Us

Applications for the RUYES program are accepted through our online portal through mid-February for the summer.

The RUYES program is funded by the National Institutes of Health/National Cancer Institute grant 1R25CA247785.

RUYES for High School Teachers

Science teachers from high schools with significant proportions of students from underrepresented backgrounds will have the opportunity to:

- Conduct basic, clinical, or population-based cancer research for eight weeks (~280 hours) during two consecutive summers.
- Receive support to design innovative cancer science curricula they can implement in their classrooms.
- Develop and share outreach and engagement activities for students, families, and the community in their school districts.
- Receive compensation to participate in the program.



RUYES for the Community

Science on the Move — Focus on Cancer

- RUYES trainees will develop cancer-focused interactive activities for outreach to students, grades 6-12, in schools across New Jersey in collaboration with Rutgers Science Explorer's "Science Bus."
- Trainees will also create outreach events to increase awareness of cancer research and prevention strategies in their families and communities.
- Trainees will gain exposure to STEM careers.
- To schedule an event at your school, contact **RUYES@cinj.rutgers.edu**.

For more information about program eligibility, applications, or scheduling an event, visit **cinj.org/RUYES** or email **RUYES@cinj.rutgers.edu**

